

# CLEAN

## PCF 系列



中压过滤器

流量 最大660L/min

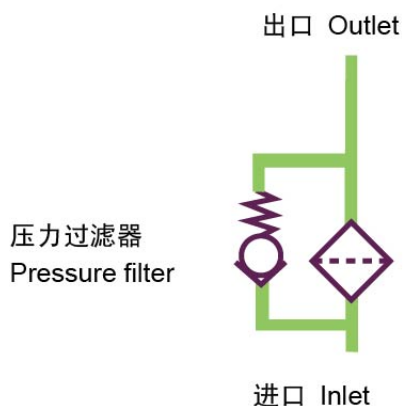
工作压力 最大70 bar



### 性能参数 Specifications

产品结构形式：管路型	Type of construction: Inline filter
安装方式：T型	Mounting method: Vertical
流动方向：在同一水平线，一边进口到另一边出口。	Flow direction: Inlet to outlet: side connection at the same level, on opposite sides
工作压力：最大70bar	Operating pressure: Max 70 bar
工作温度：-40℃ ~ +120℃	Operating temperature : -40℃ to +120℃
接口形式：BSPP/M 螺纹，法兰	Connection ports: BSPP/Metric, Flanges
密封材料：丁晴橡胶/氟橡胶。	Seal material: NBR,Viton, EPDM on request
滤材：	Filtration media:
玻纤：2、5、10、20 μ m	glass fibre: 2、5、10、20 μ m
滤纸：10、25 μ m	cellulose: 10 μ m,25 μ m
金属网：40 μ m	mesh:40 μ m.
滤芯爆破压力：20 bar	Element collapse rating:20 bar
旁通阀开启压差：6 bar	Bypass setting:Opening pressure 6 bar
其它压差可按要求制定	other settings on request.
发讯装置发讯压差：5bar，目视-目/电式	Indicator options: 5 bar- visual – visual /electrical,
其它压差可按要求定制	other settings on request.
壳体材料：铝	Filter housing: aluminium
工作介质相容性	Fluid compatibility:
适用于矿物油、人工合成油	Suitable for mineral oils, synthetic
其它介质请咨询公司技术部门	For use with water, please contact our company.

产品液压符号  
Hydraulic symbol



## 订货代码 Ordering Code

## 过滤器 The Completed Filter

PCF 0500 F 010 N F50 V

过滤器型号 Filter type \_\_\_\_\_  
 PCF: 标准形式 (1进1出) Standard Type,  
 PCFA: 2进1出型 (2 In, 1 Out) (仅0400,0500,0660可选)

流量 Flow rate (L/min) \_\_\_\_\_  
 0060, 0110,0160, 0240, 330, 0400,0500,0660

滤芯材料 Element material \_\_\_\_\_  
 P: 滤纸 Celullose ( $\beta x=2$ )  
 F: 玻纤 Glass fiber ( $\beta x \geq 200$ )  
 W: 金属网 Wire mesh

过滤精度 Filtration rating( $\mu m$ ) \_\_\_\_\_  
 (F): 002, 005, 010, 020 (P): 010, 025 (W):040

密封材料 Seals \_\_\_\_\_  
 N: 丁晴橡胶 NBR, V: 氟橡胶 Viton

接口形式 / 尺寸 Port type/Size \_\_\_\_\_

流量 Flow Rate	形式/尺寸 Type/Size								
	B(BSPP 管螺纹 Thread)				M(公制螺纹 Metric thread)				F(法兰 Flange)
	12	16	20	24	27	33	42	48	50
0060	●				●				
0110		●				●			
0160			●				●		
0240			●				●		
0330				●				●	
0400									●
0500									●
0660									●
B12=G <sup>3</sup> / <sub>4</sub> , B16=G1, B20=G1- <sup>1</sup> / <sub>4</sub> , B24=G1- <sup>1</sup> / <sub>2</sub> ,									
M27=M27x2, M33=M33x2, M42=M42x2, M48=M48x2									
F50=SAE61-2"									

压差发讯器 Indicators \_\_\_\_\_

N: 无 No, V: 目视 visual 5bar, E: 目/电式 visual/electrical 5bar

### 订货代码 Ordering Code

#### 滤芯 The Replacement element

滤芯型号 Element type	_____	PCE	0500	F	010	N
流量 Flow rate (L/min)	_____					
0030, 060,0110, 0160, 0240, 0330,0400,0500,0660						
滤芯材料 Element material	_____					
P: 滤纸 Celullose ( $\beta x=2$ ),						
F: 玻纤 Glass fiber( $\beta x \geq 200$ ),						
W: 金属网 Wire mesh						
过滤精度 Filtration rating( $\mu m$ )	_____					
(F): 002, 005, 010, 020 (P): 010, 025 (W):040						
密封材料 Seals	_____					
N: 丁晴橡胶 NBR, V: 氟橡胶 Viton						

### 过滤器主要性能参数 Filter Specification

过滤器 Filter	接口 Ports	滤芯 Element	流量 Flow(L/min)	重量 Weight(Kg)
PCF0060	G <sup>3</sup> / <sub>4</sub> , M27x2	PCE 0060	60	1.13
PCF0110	G1, M33x2	PCE 0110	110	1.6
PCF0160	G1- <sup>1</sup> / <sub>4</sub> , M42x2	PCE 0160	160	2.0
PCF0240	G1- <sup>1</sup> / <sub>2</sub> , M48x2	PCE 0240	240	2.49
PCF0330		PCE 0330	330	2.93
PCF0400	SAE61-2 "	PCE 0400	400	5.63
PCF0500		PCE 0500	500	6.89
PCF0660		PCE 0660	660	8.05

### 压降曲线 Pressure Drop Curves

过滤器的压降是壳体的压降加上清洁滤芯的压降。推荐中压过滤器初始压降不大于1.2bar。

如果所使用的工作介质粘度不是32cSt, 实际压降计算如下:

$$\Delta p = (\Delta p_{32} \times \text{工作介质粘度}) / 32\text{cSt.}$$

过滤器压降数据是基于工作介质的动力粘度32cSt、密度0.87得到。

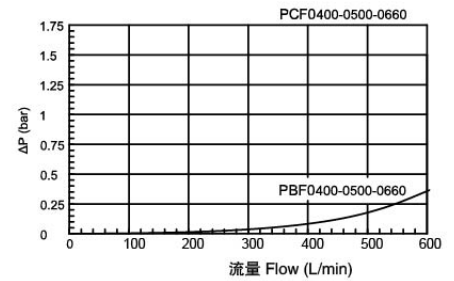
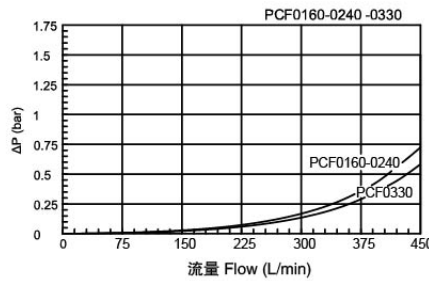
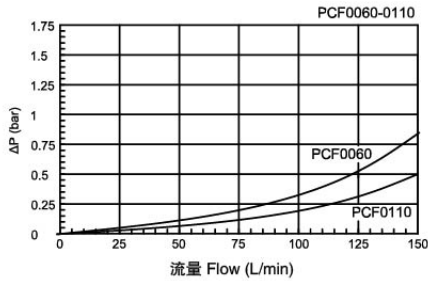
The "Assembly Pressure Drop( $\Delta P$ ) is obtained by adding the pressure drop values of the filter housing and of the clean filter element and the recommended level of the initial pressure drop for middle pressure filters is Max. 1.2 bar.

If the medium used has a viscosity different from 32cSt, pressure drop over the filter can be estimated as follows:

$$\Delta p = (\Delta p_{32} \times \text{viscosity of medium used}) / 32\text{cSt.}$$

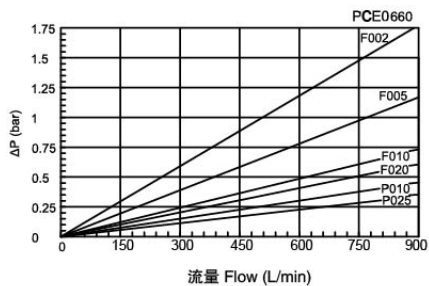
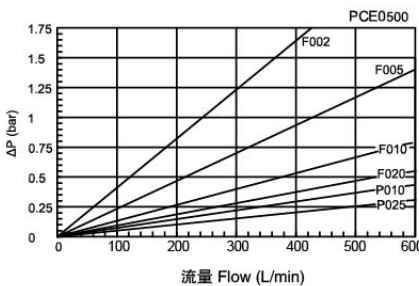
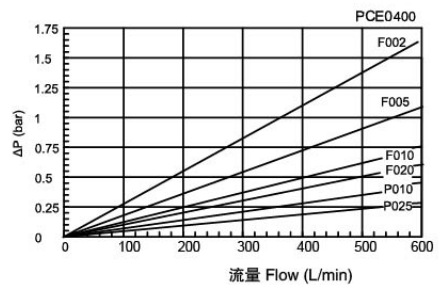
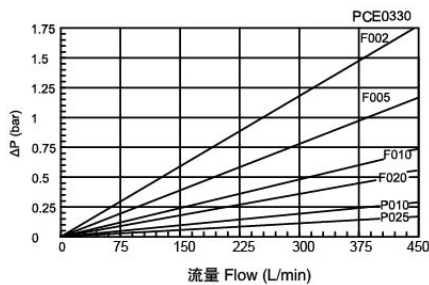
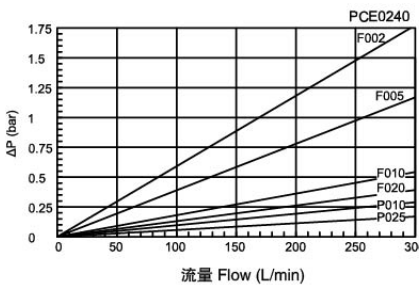
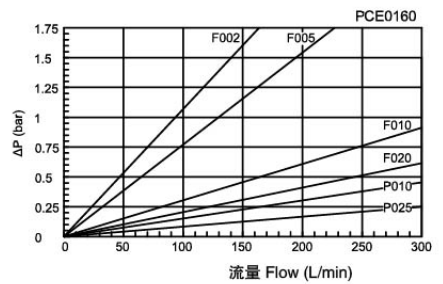
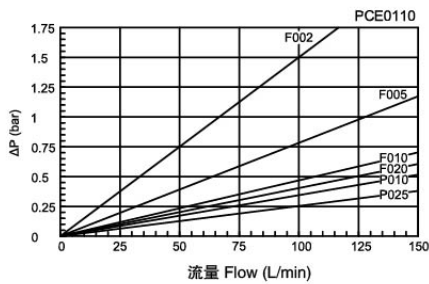
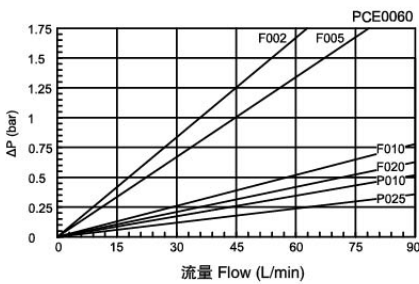
Filter pressure drop based on 32cSt fluid viscosity and 0.87 density.

壳体压降 Filter Housing Pressure Drop



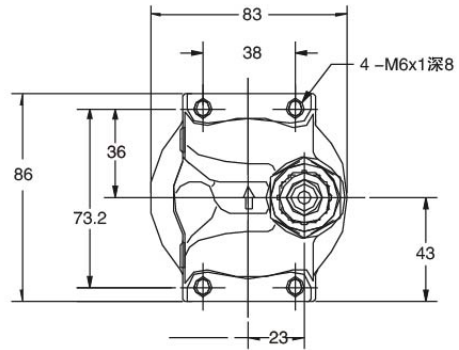
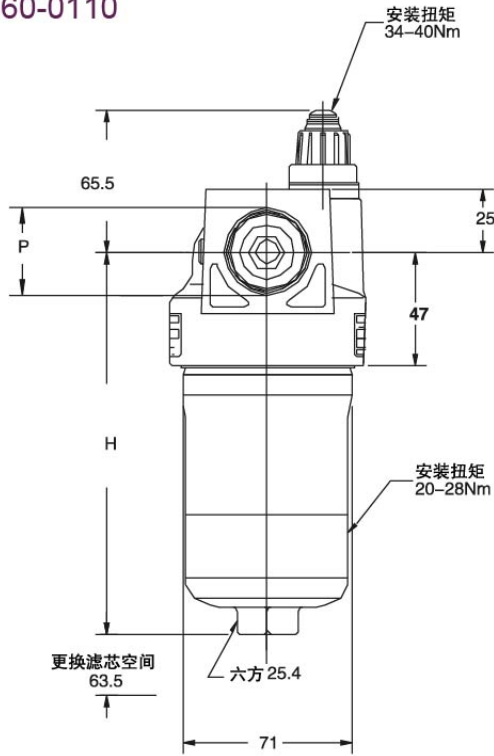
玻纤和滤纸滤芯初始压降

Clean Element Pressure Drop With Media F & P



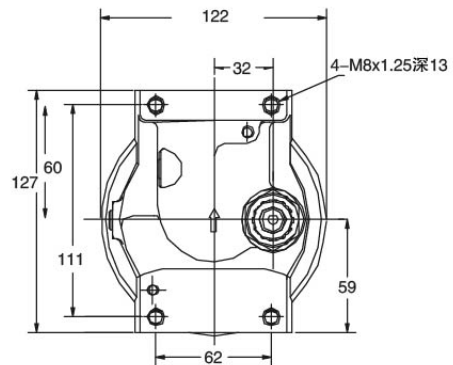
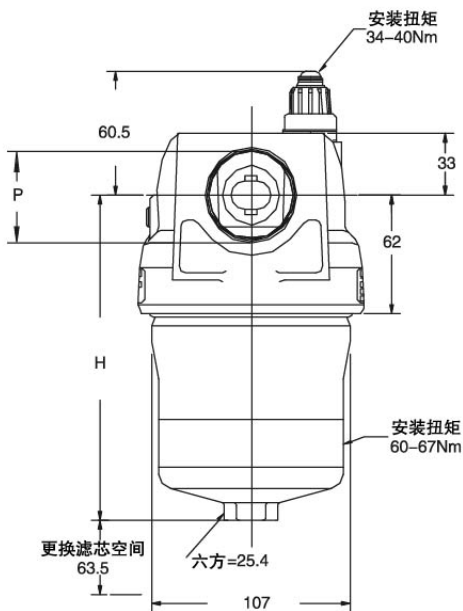
### 外廓、连接尺寸 Dimensions

PCF0060-0110



型号 Type	P	H
PCF0060	G <sup>3</sup> / <sub>4</sub>	157
PCF0110	G1	251

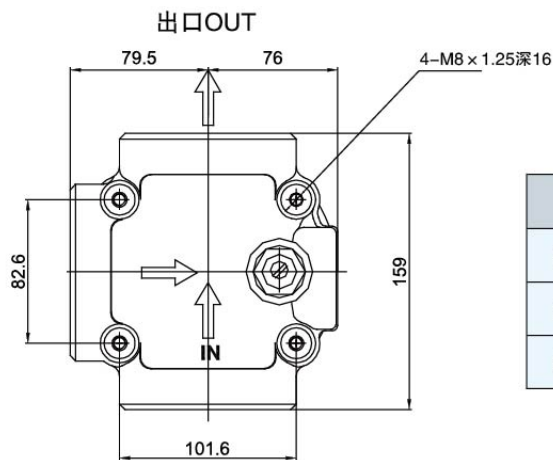
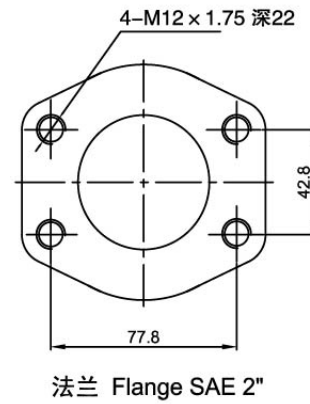
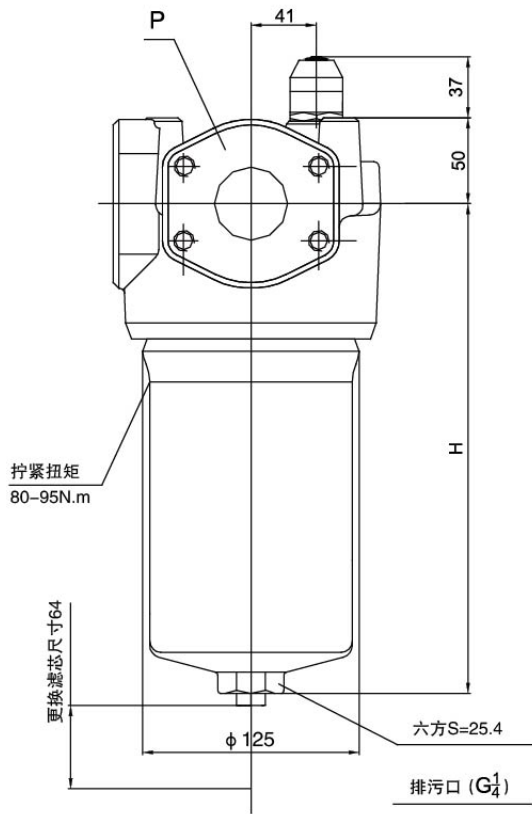
PCF0160-0240-0330



型号 Type	P	H
PCF0160	G1 1/4	171
PCF0240		263
PCF0330	G1 1/2	346

外廓、连接尺寸 Dimensions

PCF0400-0500-0660



型号 Type	P	H
PCF ( PCFA ) 0400	SAE61 - 2 "	281
PCF ( PCFA ) 0500		402
PCFP(PCFA) 0660		512